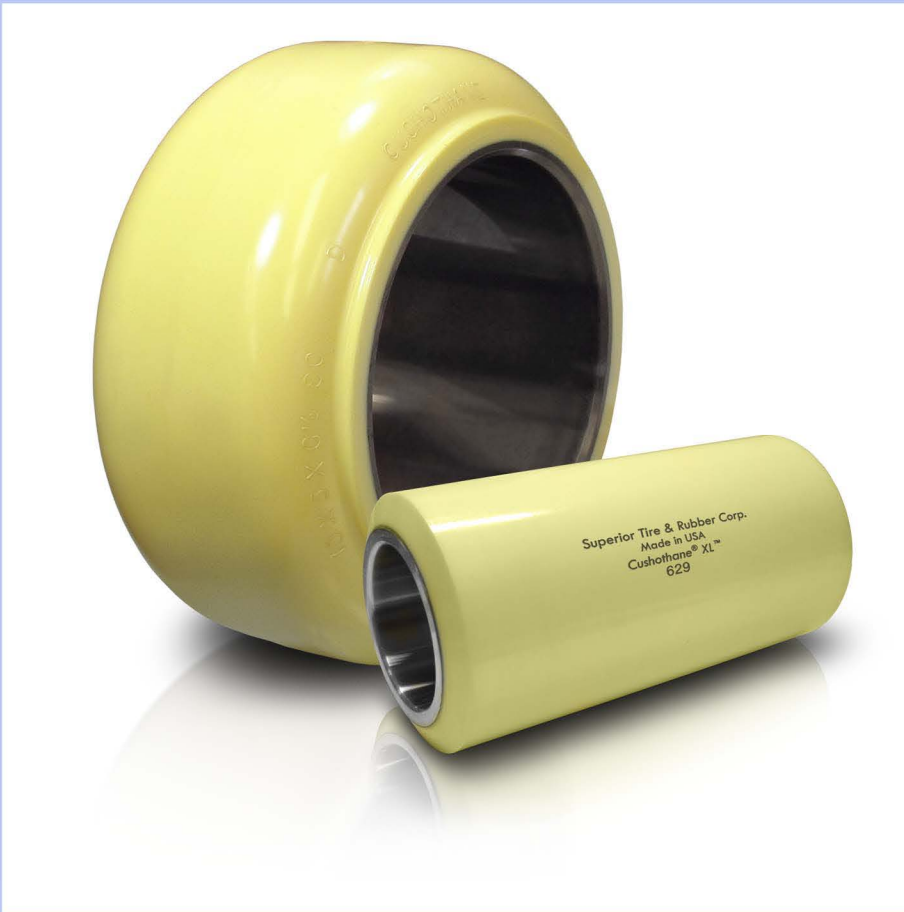


CUSHOTHANE® XL™

The Heavy Load & High Speed Specialist



- Engineered to handle the heaviest loads, high speeds and long runs
- Defies the worst surface conditions
- Reduces replacement cycle and downtime from higher wear resistant compound
- Backed by the industry's only *No Bond Failure Guarantee**

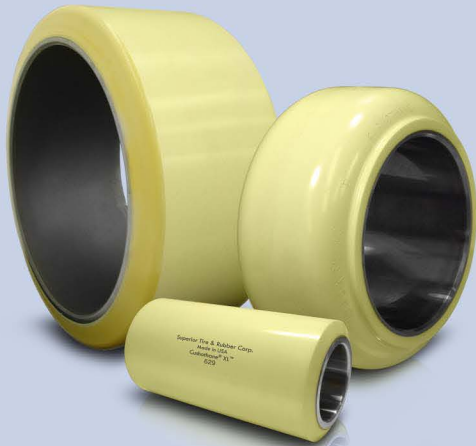


ENGINEERING REVOLUTION™

©2012 Superior Tire & Rubber Corp. All Rights Reserved.

CUSHOTHANE® XL™

The Industry Reference Problem Solver



Heaviest Load & Duty Cycle - from legendary American polyurethane technology and revolutionary XL3™ bonding technology

Defies the Worst Surface Conditions - from the toughest polyurethane compound with the highest cut & tear resistance

No Bond Failures Guaranteed†

Proprietary XL3™ bonding agent and special steel surface finishing creates a bond that resists heat and shear force.



2 Specific Compounds for Press-On Tires & Load Wheels

Cushothane® XL™ Press-On Tires

- 93A Durometer
- Higher Traction Compound
- Shorter Braking Distance
- Highest Cut & Tear Resistance



Cushothane® XL™ Load Wheels -

- 97A Durometer
- Highest Load Capacity Compound
- Highest Duty Cycle Tolerance
- XL3™ Bonding - No Bond Failures Guaranteed†



Cushothane® XL™ vs. Competition



Reduced downtime from fewer replacements & no surprise bond failure

Longer lasting from higher wear resistance*



Proven higher load capacity

*Tested with ASTM D5963 / ISO 4649 standard. Cushothane® XL™ tires have up to 305% higher wear resistance than a major US competitor's standard compound and 47% higher than a major US competitor's high load compound.

Site Proven, Customer Preferred

I was experiencing repeat bond failures at one of my customers - a large food distribution center. I had tried many different products and found nothing would meet my customer's work-life expectations. Superior Tire took the time to meet with my customer and identify a solution - the Cushothane® XL™ compound.

Since using the Cushothane® XL™, my customer has been extremely happy. They no longer have to spend extra time and money on maintenance and new wheels from premature bond failures. They were so impressed with the work-life that I have now made this the "compound of choice" at other customer locations. With the Cushothane® XL™, I know that my customers are guaranteed to have no bond failures.

Tommy Bush Tommy Bush, TruPar

†Refer to terms and conditions at www.SuperiorTire.com

CUSHOTHANE® XL™ Express WheelsSM

(Ships Same or Next business day†)

Load Wheels

- 3.25 x 3.25
- 3.25 x 4.5
- 3.25 x 5.9375
- 3.25 x 6
- 3.25 x 6.5
- 4 x 2.5
- 4 x 2.875
- 5 x 2.875
- 5 x 3.625
- 5 x 3.875
- 5 x 4.125

Press-On Tires

- 9 x 5 x 5 (SF)
- 10 x 5 x 6.5 (SF, SC)
- 13 x 5.5 x 9.5 (FT)
- 13.5 x 5.5 x 8 (SF)

Extensive & Complete list of available sizes

- Press-on Tires: 4" to 36" O.D.
- Load Wheels: 2" to 11" O.D.
- Mold On Tires also available

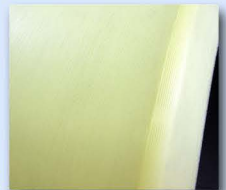
Triple Wheel Assemblies

- Designed to reduce coning & skidding effect in cornering
- Longer wear-life and higher maneuverability
- Heavy load capacity and duty cycle
- Matched wheel O.D. at less than 0.005" run-out
- Reduces chance of flat-spotting from wheel locking by debris



SuperSmooth™

Optional tread feature for all Cushothane® press-on tires with TSW tread style and an O.D. up to 16" - offering 0.015" total indicated run-out, more stability & cooler operating temperatures.



Available Tread Styles

Drive Tires

- **SSW** (Straight Side Wall) - Heavy load design
- **SF** (Smooth Flat) - General Usage applications
- **TSW** (Tapered Side Wall) - Heavy load design
- **FT** (Flat Tread) - High reach applications

Steer Tires

- **TSW** (Tapered Side Wall) - Heavy load capacity, low rolling resistance and high stability
- **SC** (Smooth Crown) - High maneuverability and high cornering stability