

14'-16'

MODEL SERIES  
INSTALLATION HEIGHTS

7'-8'

LPV2

7'-8'

SANITATION, ETL,  
LPN2, N2 NH2

8'-10'

STD2

8'-12'

PH

10'-12'

HV2

14'-16'

EP2

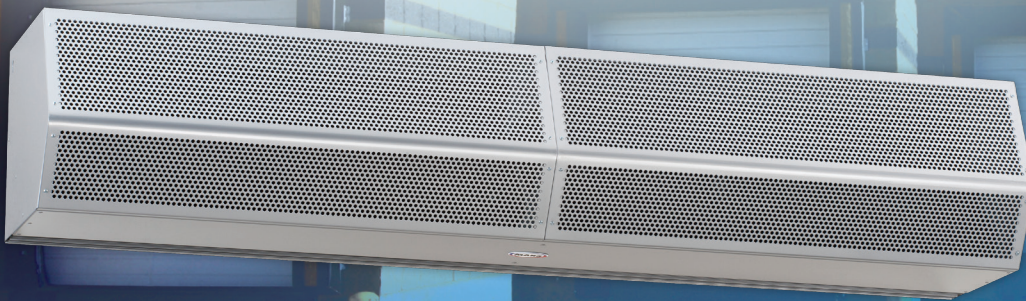
12'-16'

WMI, WMH

12'-30'

BD

# The most cost-effective environmental & sanitation barrier you'll **never** see



The best performing, most cost-effective solution in its category.  
Extra power, extra performance.

## Extra Power 2 Series industrial air curtains

### EXTRA POWER 2 SERIES INNOVATIONS

- New lower profile design
- Durable metal construction w/powder coated finish
- Easy to install
- Low maintenance and operational costs
- Contributes to LEED points
- Heating Options – Electric, Hot Water, Steam & Indirect Gas Fired
- Standard Color – Titanium Silver  
(Special Colors – Obsidian Black/Pearl White/Stls Steel - \$\$ adder)

### FEATURES IN ALL MARS AIR CURTAINS

- Maintains consistent interior temperature
- Minimizes dirt, dust, and fumes
- Controls flying insects
- Allows for unobstructed views...enhancing safety
- Effective environmental control
- Reduced energy consumption

800.421.1266 marsair.com



atmosphere is everything

# Extra Power 2 Series industrial air curtains

14'-16'

Model	Door Width Inches	Door Height Feet	FULL LOAD AMPS/ 3 $\phi$		Sound Pressure Level (dBA)	Net Wt. LBS. Unheated
			208V/ 230V	460V		
EP2 48	48"	13'-16'	8.3/7.6	3.8	76	145
EP2 60	60"	13'-16'	8.3/7.6	3.8	76	155
EP2 72-2	72"	13'-16'	16.5/15.2	7.6	79	250
EP2 84-2	84"	13'-16'	16.6/15.2	7.6	79	265
EP2 96-2	96"	13'-16'	16.6/15.2	7.6	79	280
EP2 108-2	108"	13'-16'	16.6/15.2	7.6	79	295
EP2 108-3	108"	13'-16'	24.9/22.8	11.4	81	375
EP2 120-2	120"	13'-16'	16.6/15.2	7.6	79	305
EP2 120-3	120"	13'-16'	24.9/22.8	11.4	81	390
EP2 144-3	144"	13'-16'	24.9/22.8	11.4	81	420



## VALUE ADDED ACCESSORIES

- Switch
- Control Packages
- Control Panels
- Brackets
- Filters
- Colors & Finishes

All accessories have been specifically designed to enhance installation, operations, and performance.

They have been tested and are compatible to work with the appropriate Mars units to ensure that efficiency standards and performance levels are met.

For a comprehensive list of the most commonly specified accessories, please download our full accessory brochure at: [marsair.com/accessories](http://marsair.com/accessories)

## ADDITIONAL INFORMATION

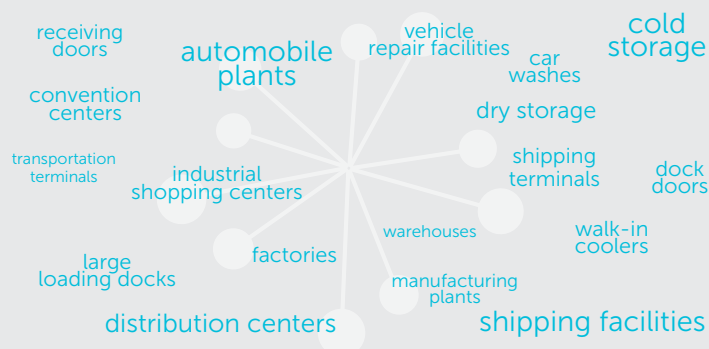
For info on how quickly our units pay for themselves in energy saving, visit: [marsair.com/ROI](http://marsair.com/ROI)

For a demonstration of how air curtains work, see our CFD slides at: [marsair.com/CFD](http://marsair.com/CFD)

For help selecting the right unit for your application, go to: [marsair.com/configurator](http://marsair.com/configurator)

For submittal information, specifications, and manuals, download: [marsair.com/techinfo](http://marsair.com/techinfo)

For air curtains 101, view: [marsair.com/introvideo](http://marsair.com/introvideo)



800.421.1266 [marsair.com](http://marsair.com)



atmosphere is everything