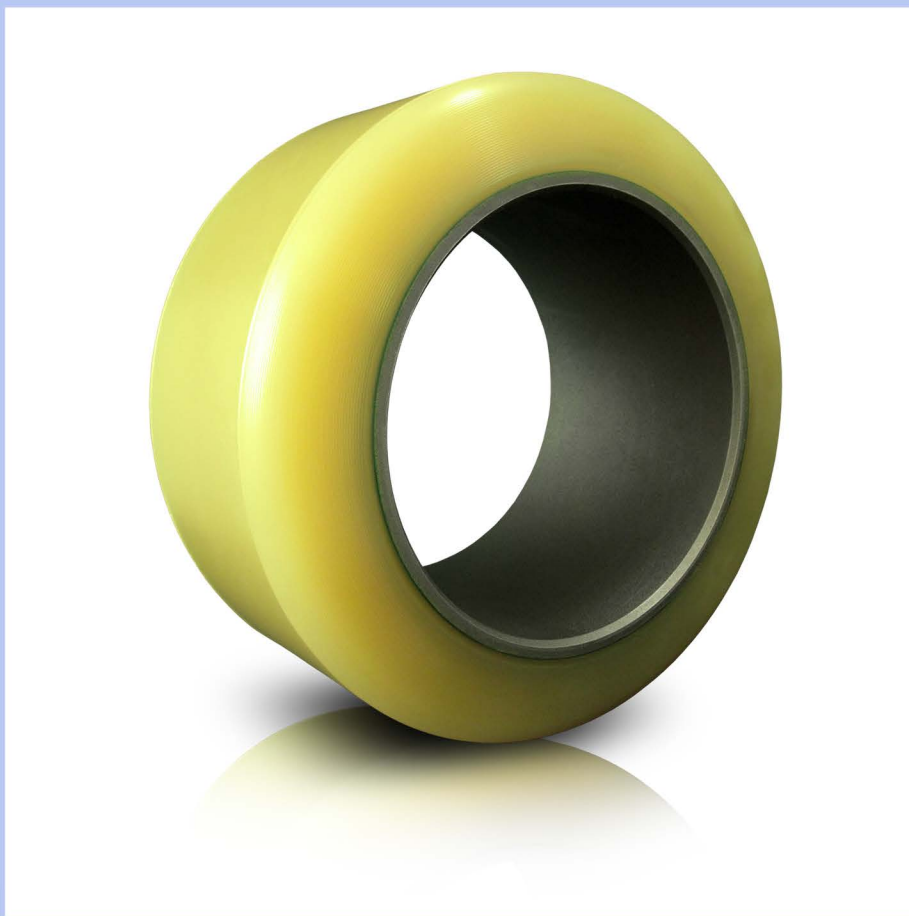


CUSHOTHANE® XL-AC™

Runs Cooler, Carries More™



- Engineered specifically for AC-powered trucks
- Highest dynamic load capacity at high speeds
- Low rolling resistance to extend battery life
- Backed by the industry's only *No Bond Failure Guarantee**
- SuperSmooth™ tread comes standard to significantly increase performance

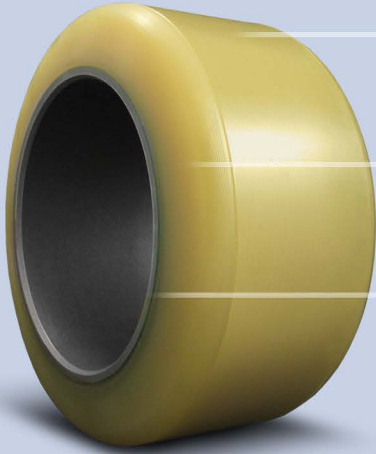


ENGINEERING REVOLUTION™

©2012 Superior Tire & Rubber Corp. All Rights Reserved.

CUSHOTHANE® XL-AC™

Go from AC-Powered to AC-Powerhouse



Engineered for AC-Powered Trucks -

Energy efficient compound provides easier rolling, capturing the full performance of AC-motor and extending battery life

Highest Dynamic Load - from the newest technology in polyurethane compounds that generates lower operating temperature in high speed warehouse applications

No Bond Failure Guaranteed

Proprietary XL3™ bonding agent and special steel surface finishing creates a bond that resists heat and shear force.



SuperSmooth™ Tread Comes Standard

The SuperSmooth™ tread feature comes standard for all Cushothane® XL-AC™ press-on tires with only 0.005" total indicated run-out. SuperSmooth™ offers greater stability & cooler operating temperatures - providing the operator with a smoother ride and prolonged wheel work-life. This feature is also available as an option for other Cushothane® press-on tires.



Energy Efficient Polyurethane Compound

- More energy lost to roll the tire
- Higher internal temperature



Common heavy load compound

- Less energy lost to roll the tire
- Lower internal temperature



Cushothane® XL-AC™ compound

The Cushothane® XL-AC™ is an energy efficient compound that reduces energy lost from tire deflection in the grip generating (contact patch) area. The lower energy loss creates less heat or cooler running tire that will reduce the chance of meltdown and bond failure and extend usage life. In addition, the tire is also easier to roll and thus drains less battery power – capturing more of the AC-motor performance.

Site Proven, Customer Preferred

"We changed our traffic pattern so that the reach trucks were traveling the entire length of the facility. The OEM tires were melting down extremely quickly - aftermarket tires worked no better. Our local dealer put the cooler running Cushothane® XL-AC™ tires on the trucks and the meltdown problem simply went away."

- Florida Food Distribution Center, Equipment Manager

CUSHOTHANE® XL-AC™ Make & Model Sizing Chart

(Most popular distribution center sizes listed)

Walkie/Rider Pallet Jack Tires

| | | |
|----------|------------|-----------------|
| Barrett® | RPX60B | 10.5 x 5 x 6.5 |
| Clark® | HWX30 | 13 x 4.5 x 8 |
| Hyster® | C60Z AC | 10 x 5 x 6.5 |
| Raymond® | 8500-FPC60 | 10 x 4.75 x 6.5 |
| Yale® | MPE080F AC | 12 x 4.5 x 8 |

Reach Truck Tires

| | | |
|----------|-------------|-----------------|
| Barrett® | SQX30LBD | 13.5 x 5.5 x 8 |
| Crown® | RD5795S-45 | 10.5 x 4.5 x 8 |
| Crown® | RR Series | 13 x 5.5 x 9.5 |
| Hyster® | N30ZDRS | 12 x 5.5 x 8 |
| Raymond® | 7400 DR32TT | 13.5 x 6 x 10.5 |
| Yale® | NR04EA | 12 x 5.5 x 8 |

Choosing the Right Compound for the Application

| | Cushothane® XL™ | Cushothane® XL-AC™ |
|------------------------|-----------------|--------------------|
| High Speed Application | ★★★★ | ★★★★ |
| Heavy Load Application | ★★★★ | ★★★★ |
| Cooler Running | ★★★★ | ★★★★ |
| Rough Surfaces | ★★★★ | ★★★★ |

Available Tread Styles

Drive Tires

| | |
|--------------------------|--|
| Straight Sidewall | SSW - Heavy load design |
| Smooth Flat | SF - General Usage applications |
| Tapered Sidewall | TSW - Heavy load design |
| Flat Tread | FT - High reach applications |

Steer Tires

| | |
|-------------------------|---|
| Tapered Sidewall | TSW - Heavy load capacity, and high stability |
| Smooth Crown | SC - Higher maneuverability and reduced turning torque |

All manufacturers' names, numbers, symbols and descriptions are for reference only. It is not implied that any part is the product of the manufacturer. CLARK® is a registered trademark of Clark Material Handling Company. CROWN® is a registered trademark of Crown Equipment Corporation. BARRETT® is a registered trademark of Barrett Industrial Trucks. HYSTER® is a registered trademark of Hyster Company. RAYMOND® is a registered trademark of The Raymond Corporation. YALE® is a registered trademark of Yale Materials Handling Corporation.

*Refer to terms and conditions at www.SuperiorTire.com



1818 Penn. Ave. West, Warren, PA 16365 USA
www.SuperiorTire.com 1.800.289.1456