



Metal that works

Strength • Support • Integrity

Corporate Manual

metalware.ca



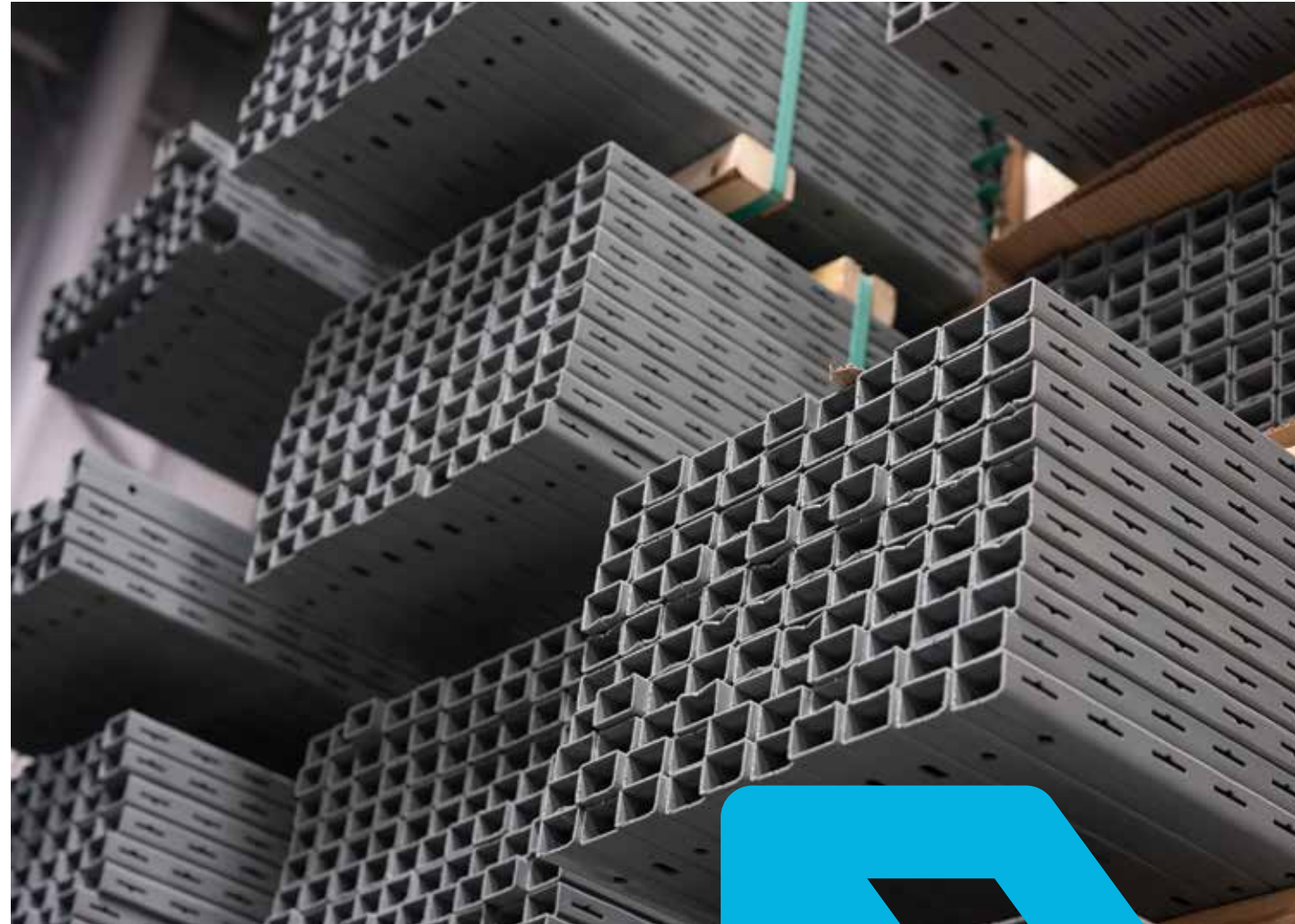
INDEX

ABOUT	2
PROJECT MANAGEMENT & SUPPORT	4
THE METALWARE PROCESS	6
INTERLOK	8
WIDESPAN	14
MULTI-TIER / CUSTOM	18
SLOTTED ANGLE BOLTED SHELVING	24

The Metalware advantage

These core principles define us because we love what we do. From conceptualization, through production, right down to delivery, we trust in the strength and integrity of our products and our processes.

Finding the right storage solution for your clients is our absolute top priority. Our team of storage solution specialists supports you, and works with you from start to finish, to develop ideas, design layouts and implement custom storage solutions to help take your client's businesses to the next level.



How we stack up

Metalware is among **North America's** leading industrial shelving manufacturers.

As the first company to patent and market No-Bolt shelving, we pride ourselves in always being one step ahead of our competition through innovative technologies, adaptive solutions, competitive prices and unparalleled customer service.

Bottom line — we've been setting the bar for industrial shelving for over 65 years.



/ Metalware works for you

We are real people who know the value of a job well done. We love what we do, and it shows.

From conception to delivery, our team supports you every step of the way by helping manage your project and ensuring that your client is only receiving the best. Our unwavering dedication is one of our biggest strengths, and we put it to good use. Work with us, and we'll bring to fruition any -and all- of your client's needs.

Planning & Assessment

- / Client qualification
- / Timing
- / Budgeting
- / Structural assessment



Customized Solutions

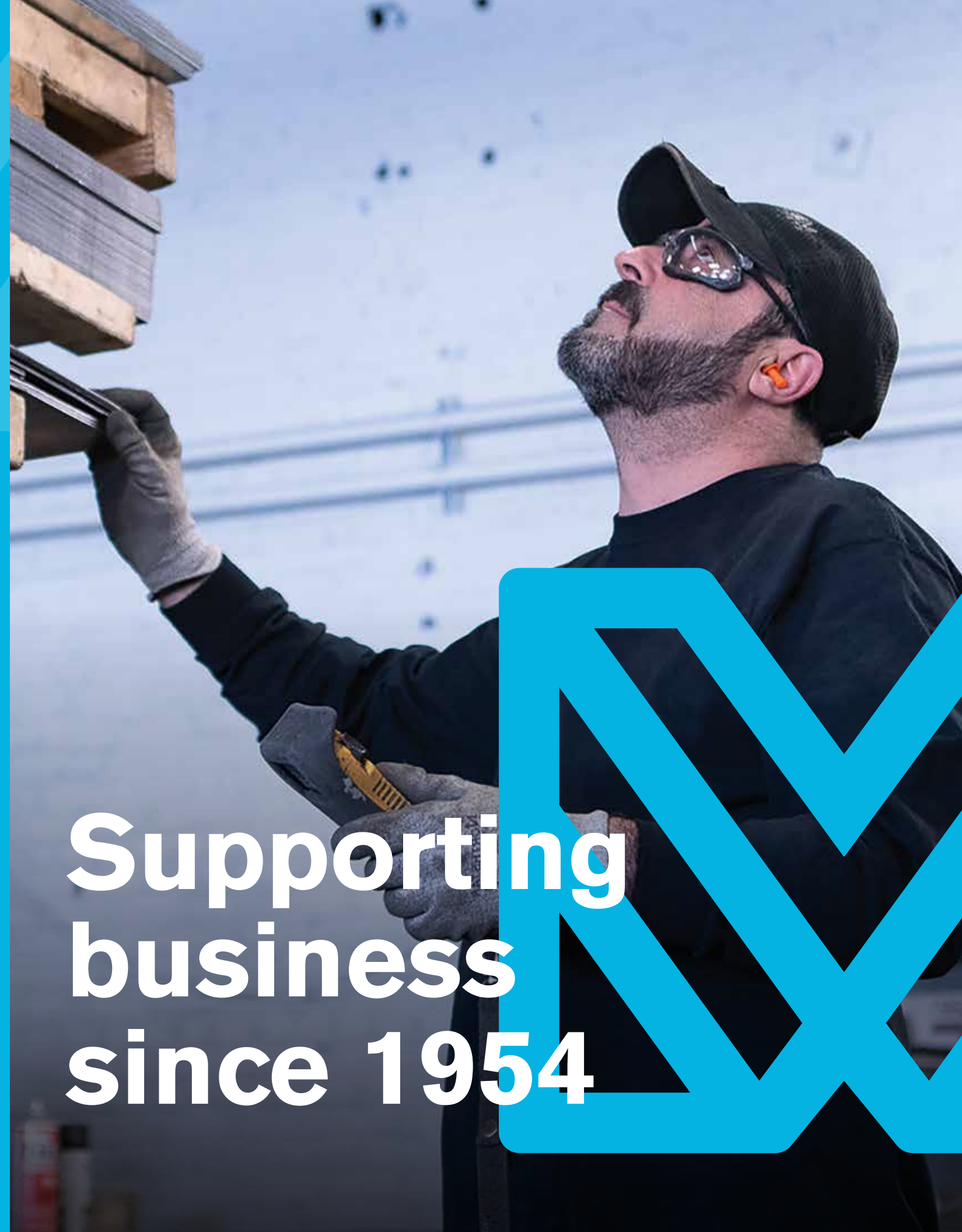
- / Production
- / Logistics planning (transport and delivery)
- / Installation correspondence (when required)

Design & Layout

- / Line drawings
- / Renderings (when required)
- / Detailed costing



Supporting business since 1954



/ The Metalware process

Our step-by-step questionnaire ensures we have all the information we need to assess the scope of the project your client requires. The more information you provide, the more accurately we'll be able to assess the needs of your project.

We've provided this handy questionnaire to accompany you in identifying the best possible solution for your clients.

Give us the information, and we'll provide the solutions.

What company/industry is the client in for this project?

What is the size of the area in which you would like shelving?

- / Length, width and height.....
- / Do specific areas need to be open for doorways, aisles, etc?
- If yes, what is the aisle width/length requirement?
- / Are there any obstructions in the area? (I.e. columns, HVAC, sprinklers, etc.)
- / Are the floors level throughout the space?
- If no, please indicate all variances
- / Does a drawing of this space exist?
- If yes, please attach
- A hand drawing can also be included to detail as much as possible.

Do you want to access the shelves from both sides of the unit?

Do you want a closed or open unit?.....

Do you need wood, steel or wire mesh shelving?

What size shelving do you need?

- / Depth, width and height

How many shelves do you need?

What weight capacity do you need each shelf to have?.....

What types of products will be stored on the shelves?

- / Do they require specific shelf spacing?
- / Please provide weight & dimensions of products

Do you need additional accessories?

- / If yes, please specify (i.e. bin fronts, separators, drawers, base plates, etc.)

Will you potentially have the need to expand your shelving to a multi-tier or high rise system?.....

- If yes:
- / How many additional levels?
 - / Will it be planned initially, or implemented in the future?
 - / How many staircases do you want?
 - / What type of flooring do you want? (OSP- open steel planking, bar grating, Resindek)

Please provide any additional information relevant to the installation

- / Timing
- / Unloading restrictions.....
- / Etc.

Do you require Metalware to organize the freight?

/ Interlok

Strength, durability and cost-effectiveness are the names of the game with the Interlok. This versatile 'No-Bolt' shelving system, produced in either 18 or 20 gauge cold-rolled steel, is designed to keep quality high and costs low by reducing nuts, bolts and other tools from the assembly process.

Its efficient design requires no additional floor space during assembly and allows for easy rearrangement without dismantling. In addition, a multitude of accessories is available for this product line.

/ Features



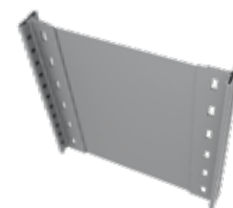
20 Gauge Box Shelves

- / Welded box structure that yields a heavier load capacity.
- / Double folded closed corners.
- / Two-way locking principle at each corner.



T-Posts

- / Roll formed and welded at 4" centers.
- / Smooth non-perforated front face.
- / Side perforations at both 1" and 2" centers for maximum adjustability.



End panels

- / Close off a unit from the side using 24-gauge steel panels factory-welded to two T-Posts.
- / Our factory welded end panels drastically reduce installation time.



Perforated End panels

- / Replace regular back panels.
- / Perforations are at 1" center, allowing hooks and other accessories to be supported.
- / They can be customized to incorporate a logo. Various sizes available.



Open Unit

- / Includes side & back braces connected to T-Posts with nuts and bolts.



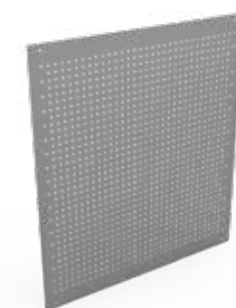
Shelf Clips

- / 1-2" adjustability per shelf.
- / Quick and easy installation.



Back Panels

- / Close off a unit from the back using 24-gauge steel panels pre-punched to accommodate back panel clips.



Perforated Back Panels

- / Replace regular back panels.
- / Can be used to hang hooks or different accessories. Various sizes available.

Components and Accessories

- 1. Shims**

Elevate posts when flooring is not level.
- 2. Base Plates**

Close off the bottom of the unit to stop things from rolling under.
- 3. Foot Plates**

Anchor the shelving system onto the floor.
- 4. Shelf Boxes**

Hold small items onto the shelves. Various sizes available.
- 5. Bin Fronts**

Stop small items from falling off the front of the shelf. Various sizes available.
- 6. Hanging Bars**

Allow items to be suspended in the unit. Available in 36", 42" and 48" widths.



Interlok Standard Size Chart

Capacity can be affected by unit configuration.
Other dimensions available upon request.
Uniformly distributed load in lbs.
"X" - custom configuration, only available upon request.

	30"	36"	42"	48"
12"	600	800	650	550
15"	600	800	650	550
16"	X	X	650	X
18"	600	800	650	550
24"	600	800	650	450
30"	X	650	450	350
32"	X	X	450	X
36"	X	X	X	350

7. Sliding Dividers

Mobile dividers that attach to the bottom of the shelf.
Maximum adjustability by sliding horizontally across the shelf.
Available in 6" and 8" heights.

8. Dividers

Create compartments on the shelf.
Rolled front for a smooth edge.
Attached with divider clips or flathead nuts and bolts.
Available in the following sizes:
4" - 24" in Height
12" - 32" in Depth

9. Label Holders

Allow users to insert labels for easier identification of shelf contents.

10. Swinging Doors

Close the front of a unit with a locking mechanism and flush handle.
Sets are available in the following sizes:
36" x 3'4", 6'4", or 7'4"
48" x 3'4", 6'4", or 7'4"

/ Interlok Installations

Examples of various Interlok installations.



/ Distribution Centre for Tools and Hardware Products



/ Automotive Distribution Centre



/ E-Commerce Warehouse for Apparel Industry



/ Automotive Dealership

/ Widespan

Featuring the best weight capacity of the Metalware storage systems, the Widespan offers state-of-the-art durability, flexibility and efficiency for all your storage needs. It is a versatile solution, particularly well-suited to industries with a High Volume per SKU ratio (like e-commerce inventory, clothing or automotive parts). It is also ideal for the storage of company records, as well as many other utilities.

Its fully open system, accessible from all sides, offers a variety of shelf options for every need as well as easy expansion possibilities both in height or width.

/ Features

1. Frame Connectors

/ Connect posts from front to back.

2. Posts

/ 12-gauge roll formed post with 2" slots for easy height adjustability.

3. Foot Plates

/ Anchor the units to the floor.

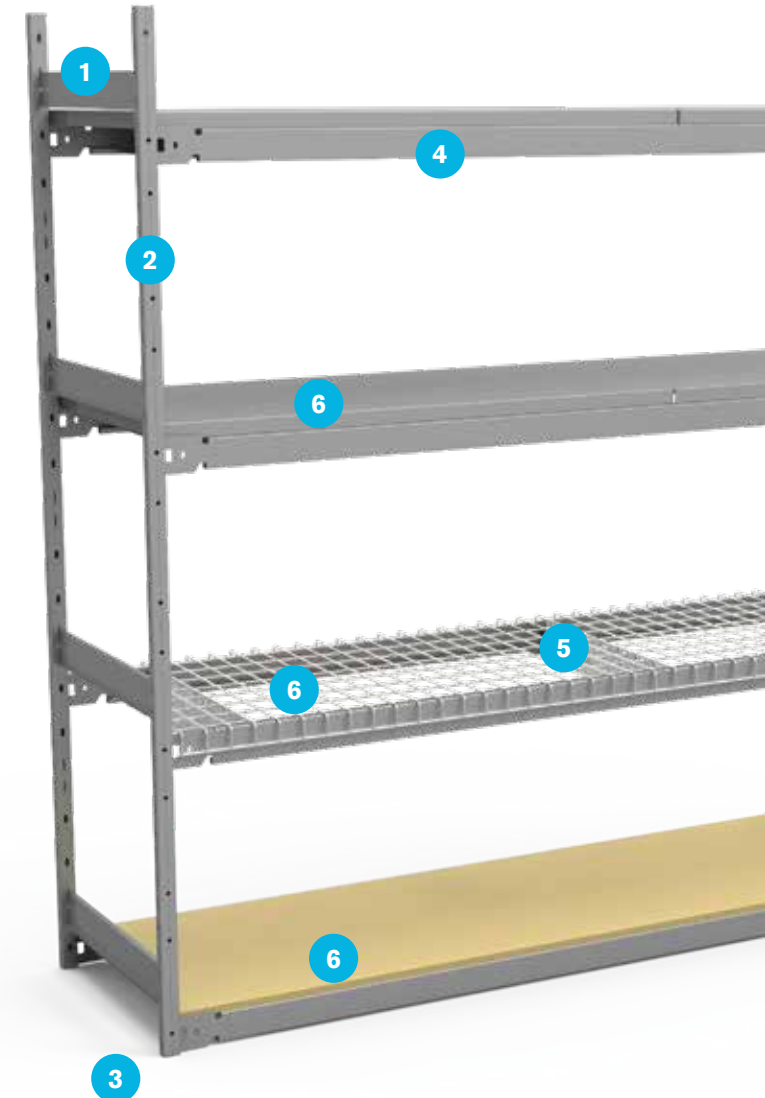
4. Beams

/ The main shelf support of the system. 2" profile beams made of 13-gauge steel and available in a variety of widths and weight capacities.

5. Tie Bars

/ Placed between the two beams, they increase the capacity of the shelf level and avoid the buckling of longer beams.

6. Wood, Steel or Wire Mesh Shelf Options



Widespan Pair of Beams capacity

36" - 1TB	42" - 1TB	48" - 1TB	48" - 2TB	60" - 2TB	66" - 2TB	72" - 2TB	84" - 2TB	96" - 2TB	96" - 3TB
1500	1350	1100	1300	970	840	770	850	765	950

Capacity per pair of beams only.

Units are available in 12", 15", 16", 18", 24", 30", 32", 36", 42" & 48" deep.

*Triangular tie bars for 84" and 96" beams only.

/ Widespan Installations

Examples of various Widespan installations.



/ E-commerce Distribution Centre for Apparel Industry



/ Third Party Distribution Centre for Walmart



/ Warehouse for Plumbing and Bathroom Accessories

Multi-Tier / Custom Systems

The Interlok and the Widespan shelving solutions both offer significant upward expansion thanks to the possibility of being transformed into multi-tiered or high-rise systems, allowing our clients to maximize their storage capacities while minimizing costs linked to relocation or warehouse expansion.

In addition to providing multi-tiered or high-rise systems, Metalware also offers the possibility to create custom accessories to adapt to these systems, including but not limited to:

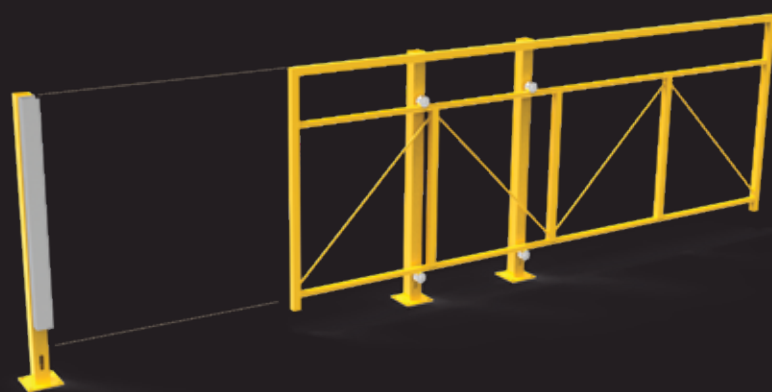
Staircases

Guardrails

Mezzanine Safety Gates

Flooring Options

(bar grating, Resindek, Open Steel Planking, etc.)



Swing gates



Guardrails

/ Multi-Tier & Custom Installations

Metalware's dedicated team of storage solution specialists is at your disposal to make any concept or custom storage solution possible. If you have something in mind, we can make it happen.

We work with you to develop the idea, design the layouts and implement the customized solution, so get in touch today for a free quote.



/ High-rise System for the Electronics Industry



/ Mobile Shelving System for the Pharmaceutical Industry



/ Automotive Wholesale Distribution Centre

/ Multi-Tier & Custom Installations



/ E-commerce Distribution Centre for Apparel Industry



/ Flexible Shelving for Hanging and Folded Clothing



/ Integrated Conveyor in a Multi-tier System

/ Slotted Angle Bolted Shelving

The Slotted Angle Bolted Shelving is an economical storage solution. Available with braces, gussets or panels, the two different types of posts can be cut and bolted into a variety of shapes (workbenches, shelves, tables, etc.) and can also be used as a top tie with our Widespan and Interlock product lines. It is best suited for use in homes or small offices.

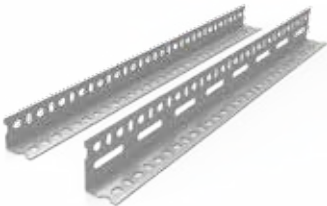


Features



Galvanized Steel Shelves

Ideal for temperature sensitive environments.



Slotted Angle Posts

2 different post profiles for varying weight capacities.



Gussets



Nuts and Bolts





METALWARE

5735 Place Turcot, Montréal, QC H4C 1V9 | info@metalware.ca | 514.937.9533 | metalware.ca